

## Observations

Description of things using:

---

---

---

---

---

## Not Observations

---

---

---

**Observation:** A description using your \_\_\_\_\_

## What variables affect plant growth?

Group 1

Changing Variable:					
Change in Plant Height: (mm)					

Summary: \_\_\_\_\_

---

Group 2

Changing Variable:					
Change in Plant Height: (mm)					

Summary: \_\_\_\_\_

---

Group 3

Changing Variable:					
Change in Plant Height: (mm)					

Summary: \_\_\_\_\_

---

Group 4

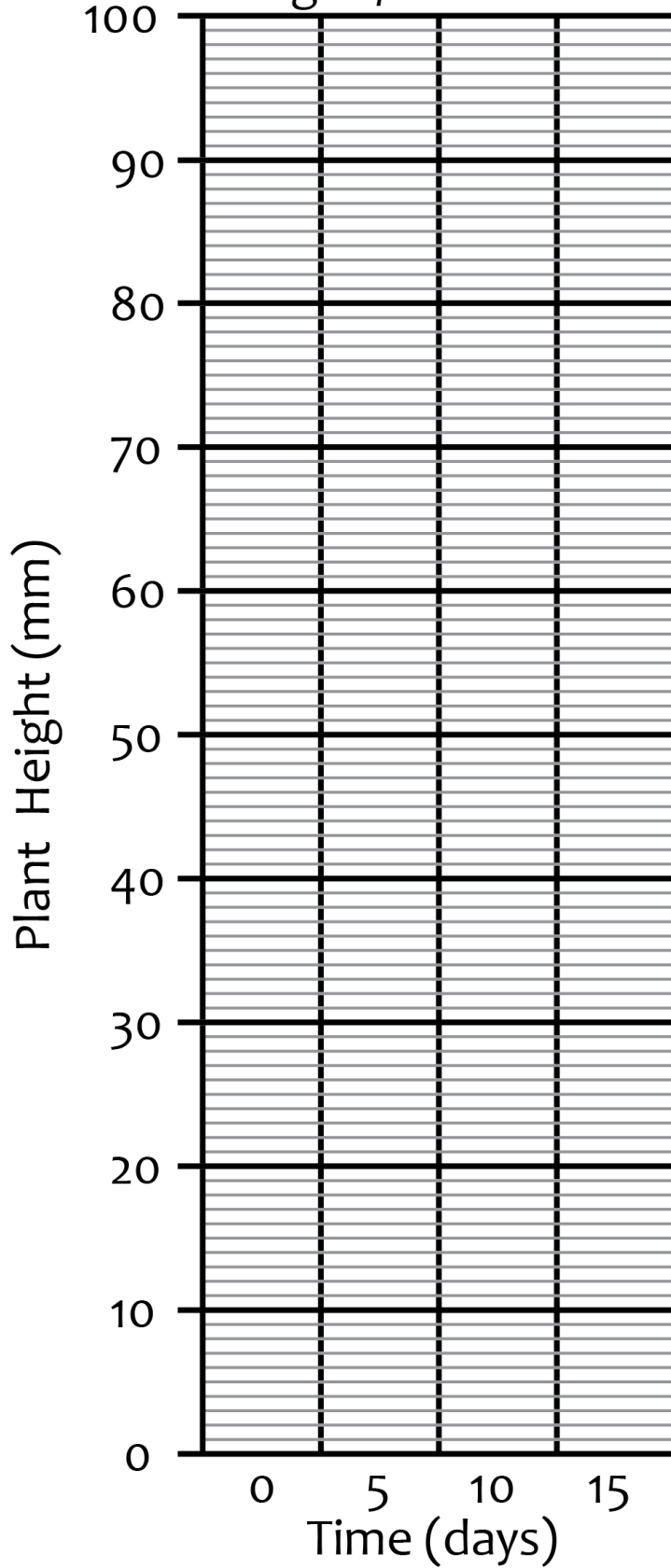
Changing Variable:					
Change in Plant Height: (mm)					

Summary: \_\_\_\_\_

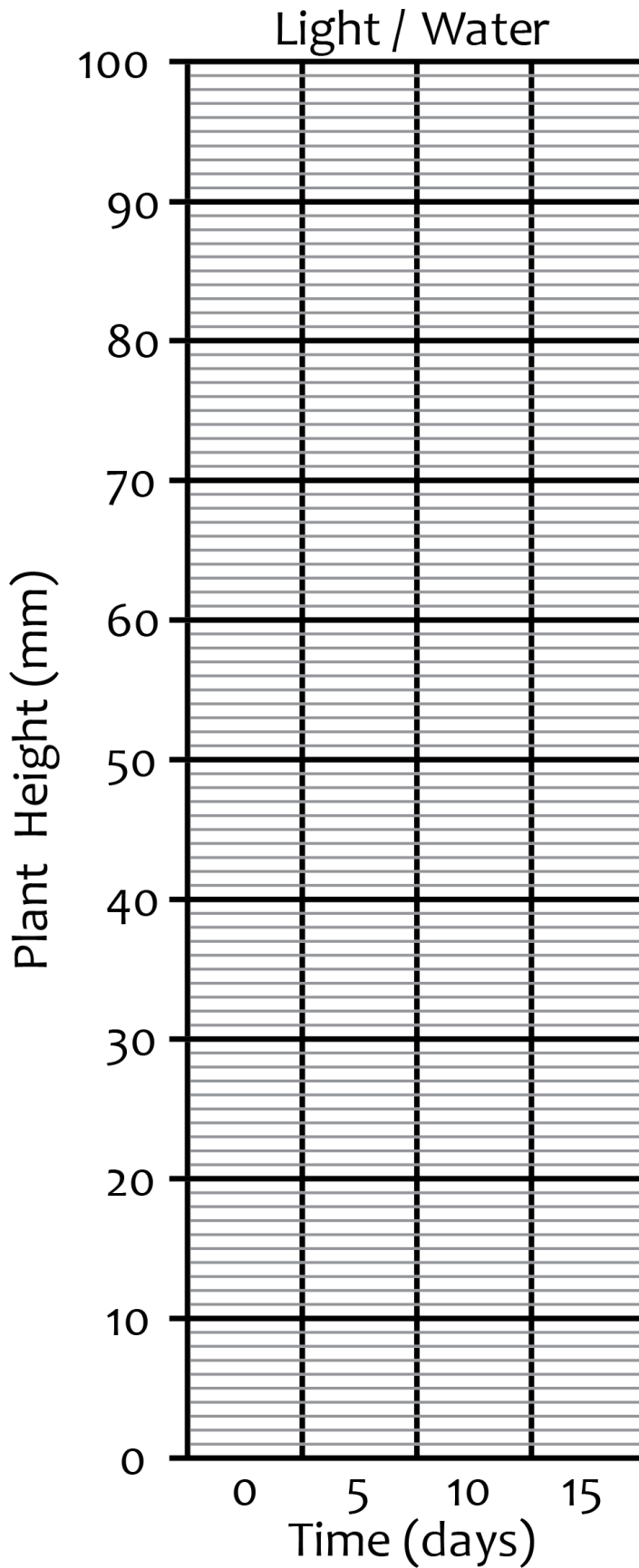
---

# Class Prediction

Light / No Water



# Class Prediction

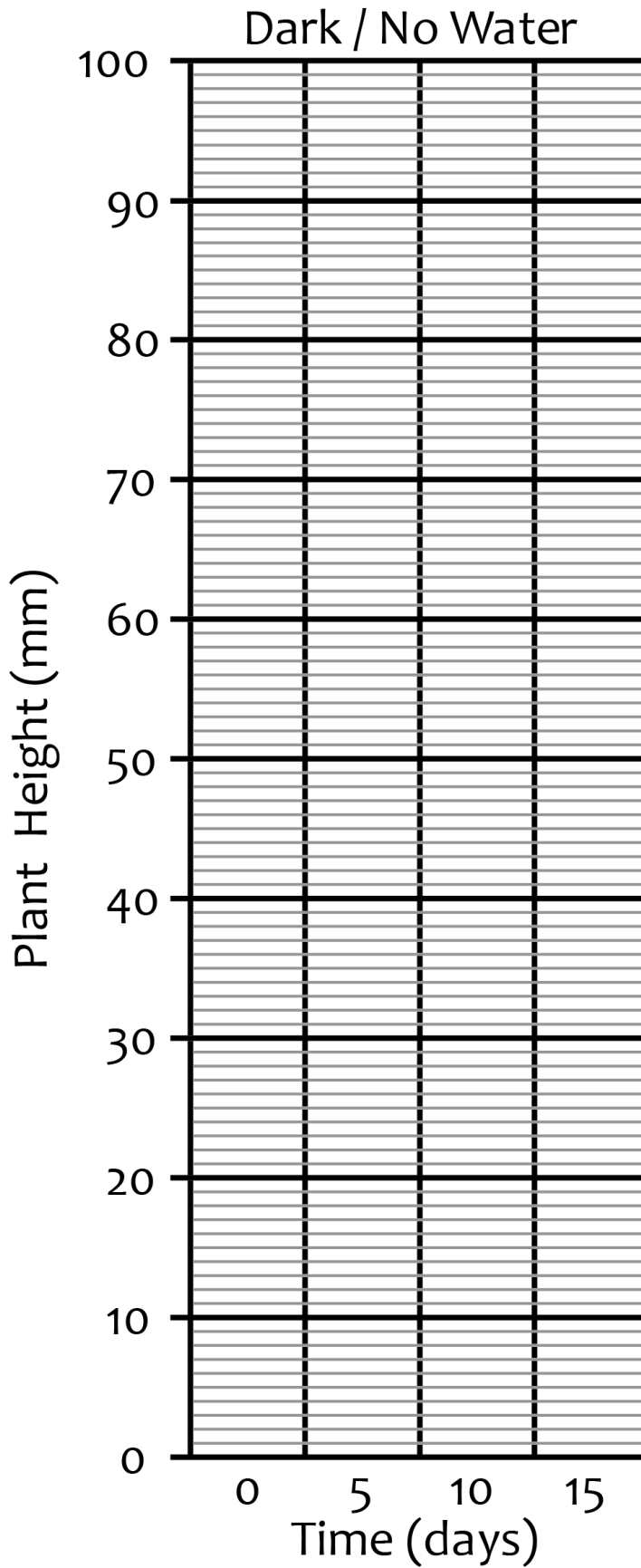


# Experimental Data

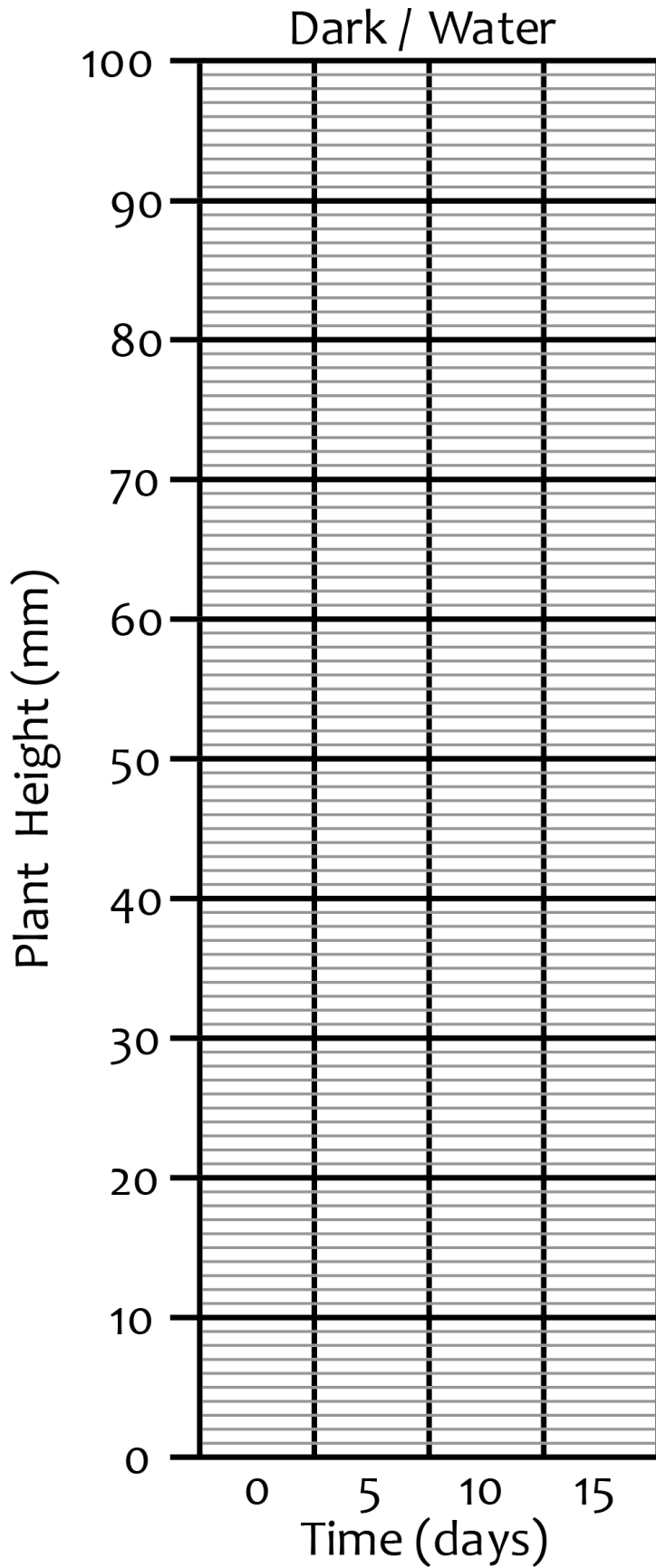
Day	Light No Water
Day 0	0 mm
Day 5	0 mm
Day 10	0 mm
Day 15	0 mm

Day	Light Water
Day 0	0 mm
Day 5	23 mm
Day 10	73 mm
Day 15	100 mm

# Class Prediction



# Class Prediction



# Experimental Data

Day	Dark No Water
Day 0	0 mm
Day 5	0 mm
Day 10	0 mm
Day 15	0 mm

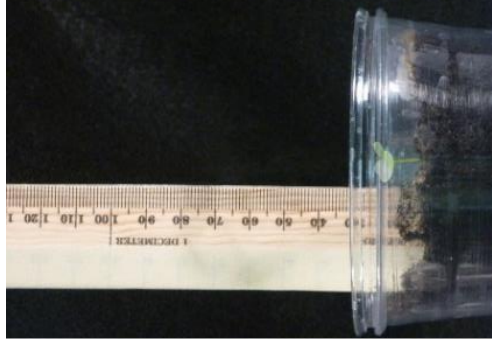
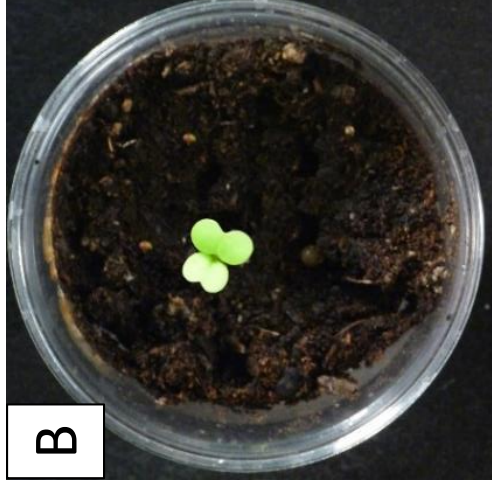
Day	Dark Water
Day 0	0 mm
Day 5	49 mm
Day 10	93 mm
Day 15	94 mm



# Plants in the Light



Day \_\_\_\_\_



Day \_\_\_\_\_



Day \_\_\_\_\_



Day \_\_\_\_\_

# Plants in the Dark



Day \_\_\_\_\_



Day \_\_\_\_\_



Day \_\_\_\_\_



Day \_\_\_\_\_